



2022 JLTASA Newsletter

2022年の学年へようこそ。このニュースレターはバイリンガルで読めて、日本語の挨拶は後ろで読んで下さい。
Welcome to the 2022 school year! This newsletter can be read bilingually - please read the Japanese welcome at the back.

INSIDE NEWSLETTER :

1. Welcome to our new committee
2. 2022: Events Calendar & New Initiatives
3. Annual Conference - back for 2022!
4. Hub Groups and Grants
5. Resources and General Notices



President's Welcome 会長の挨拶

Where is this 'new normal' we were promised?

Contact: president@jltasa.asn.au

It feels like every year since the pandemic we launch into the start of the school year renewed with hope that this year will be different; surely the worst is over? And yet each year we find further challenges to education and teaching emerging as we overcome previous ones! However frustrating, the pandemic has provided some benefit, by forcing us to find different ways to engage students, especially digitally, and so there is a small silver lining to being forced into 'learning at home' for a week.

This year sees the (planned) return of our Annual Conference, and I encourage members to get involved by presenting a workshop. Teaching something, as we know, helps our own learning and professional growth, and is incredibly rewarding. Those wanting to apply for HA/LT should definitely leap at this opportunity to gather evidence of sharing your knowledge and expertise with others. Don't forget, you don't have to present alone! Find a colleague who shares a common interest, for example. This year we are testing the waters with a series of 'asynchronous' workshops available as

part of the annual conference. These pre-recorded, mini presentations could be an excellent way to dip your toe in the water!

In 2022 we see many new faces on the committee, which brings many opportunities for refreshing what we offer to teachers. Our recent Professional Learning at AGSA was just one example of new initiatives we will be trialling this year. I encourage you to get in touch with me or any committee member if you have any ideas for professional learning. We are, after all, an association run by and for our members.

Don't forget about the range of support and resources available to members: grants (student event travel, professional learning, advocacy projects, hub group support), hub groups, student events, and of course professional learning.

Here's to 2022!
明けましておめでとう



Tom Dawson トム・ドーソン
2022 JLTASA President

Tom is an early career teacher entering his fifth year of teaching in 2022. He teaches from Year 7-12 Japanese at Gleeson College in Golden Grove, along with other subjects such as Business and Innovation. His love of Japan and Japanese began from the early age, studying Japanese from Reception through to Stage 2, before studying at UniSA and Kansai Gaidai in Hirakata, Kansai for six months.



Welcome to our new **2022 Committee** 2022年の委員会メンバー 紹介

Our committee is made up of a wide range of teachers from all three education sectors in SA, with experience ranging from 1-2, to 20+ years. While we love what we do, please remember we serve JLTASA in a volunteer capacity, which means contact can be intermittent during busy periods of the school year.

President 会長
Tom Dawson, Gleeson College

Vice President 副会長
Megan Lock, Nazareth Catholic Community

Secretary 秘書
Mel Watt, Warradale PS

Treasurer 会計
Ilana Nicolle, Henley HS

Committee Member 委員
Alex Zhang, Open Access College

Committee Member 委員
Amanda Gunawan, Blackwood PS

Committee Member 委員
Catherine Emmerson, St John's Grammar

Committee Member 委員
Satomi Glenn, Norwood Morialta HS

Committee Member 委員
Yuki Akita, Immanuel College

Committee Member 委員
Rachel Francis, Immanuel College

Committee Member 委員
Cindy Pitkin, St Peter's Girls' School

Committee Member 委員
Candice Ferguson, Para Hills HS



JAPANESE LANGUAGE TEACHERS' ASSOCIATION OF SA INC

NEW AND RETURNING TEACHERS' WORKSHOP

Are you or is someone you know a newly graduated Japanese teacher? First contract and not sure where to start? Or are you returning to the Japanese classroom after extended leave?

If so, this is the workshop for you! With hints, suggestions and resources aplenty, meet and network with both experienced and new teachers, and ask any questions about AC/SACE.

WED FEBRUARY 23, 2022 | 6:30-8PM

VENUE TBC

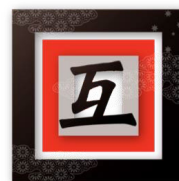
(e-access available for country teachers on request)

FREE FOR JLTASA MEMBERS

Register via our website: jltasa.asn.au
Queries: cpitkin@stpetersgirls.sa.edu.au

南オーストラリア州日本語教師会

JLTASA 2022 Events



STUDENT EVENTS

Year 10 Movie Making Day	*Friday 3 June, 9.30am-2.30pm St John's Grammar School, Belair
Year 6 Japanese Quiz Day	Wednesday 21 June, *9:30am-2:30pm Education Development Centre, Hindmarsh
Year 9 Japanese Quiz Day	Wednesday 10 August, *9:30am-12:00pm Education Development Centre, Hindmarsh
Year 7/8 Recital & National Speech Contest	Saturday 3 September, *12:45pm-3:00pm Education Development Centre, Hindmarsh
Year 12 Kaiwa no Hi	Term 3 Holidays (date & time TBA)
Year 5/6 Statewide Hiragana Competition	*Tuesday 18 October, 9:30am-11:30am Education Development Centre, Hindmarsh
Year 4/5 Obento Master <i>Two locations to choose from!</i>	Term 4 (probably early November) South – location & date TBA North – we are looking for a host school – please get in touch if you are happy to host this event with a committee member's support

***date/time approximate only.** Student events are free but open to members only (either the teacher or school may be a member). Events fill quickly, with registration opening approximately a month before the event. Keep an eye on your emails and/or Facebook for the event to open.

TEACHER PROFESSIONAL LEARNING

New & Returning Teachers' Workshop	Wednesday 23 February, 6:00–7:30pm Education Development Centre, Hindmarsh
JLTASA Annual Conference	Saturday 28 May, *8:45am-4:00pm Education Development Centre, Hindmarsh
Term 3 PL & Term 4 AGM/PL	TBA

2022 National Symposium on Japanese Language Education

4-5 November, State Library of Victoria. Info: <https://nsjle.org.au/>

イベント Events - Calendar and Updates

 [Access the Google Calendar here](#)

Events are loaded onto our website throughout the year (<https://jltasa.asn.au/events>), as well as advertised through our mailing list. Some member-only events are advertised exclusively via our email list, so please do not rely solely on our Facebook page for information and updates.

Terms 1-2

Hiragana Mnemonic Comp

This year we will be running a hiragana mnemonic design competition open to all member schools (all year levels!), in order to create an authentic, local, creative commons-licensed flashcard set! See flyer on page [+](#) [-](#) for more info.

2月23日 (水)

'NART' ECT Workshop

Our first (well, second!) professional learning opportunity for the year. Please advertise this widely among your networks, especially if you are aware of any recent graduates who would benefit from this. [Registrations now open.](#)

5月28日 (土)

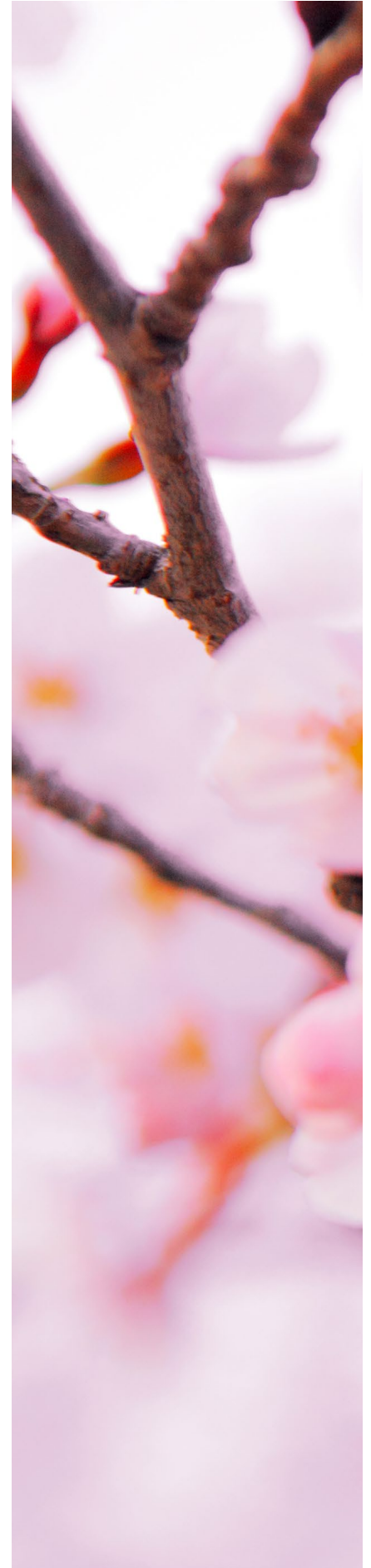
Annual Conference

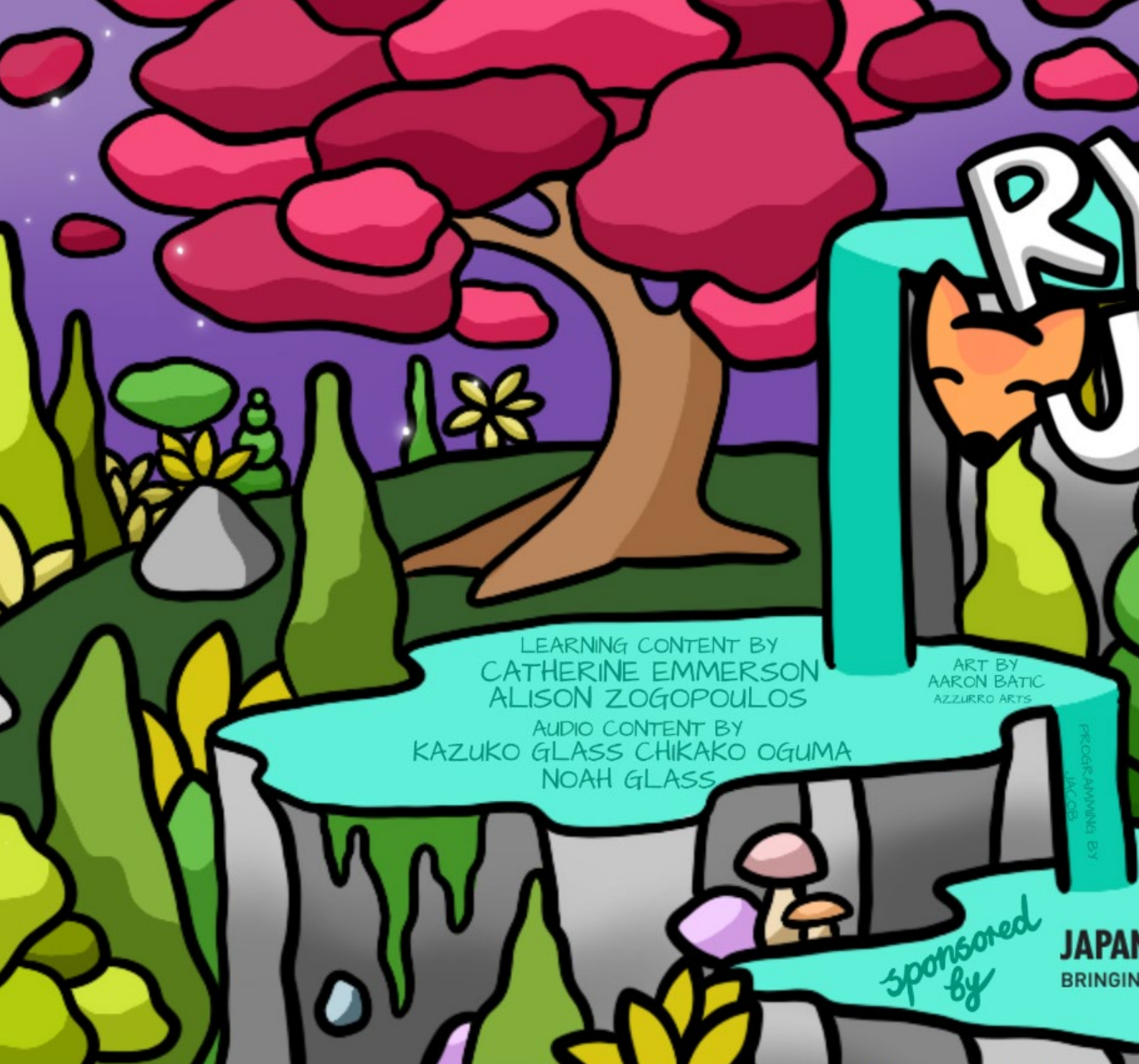
See page [八~九](#) for further details. [Expressions of Interest for presenters now open.](#)

9月3日 (土)

Yr 7-8 Speech Contest

Please note change in date - the event will now coincide with the annual Japan Foundation Speech Contest, to inspire students and communities to see where their Japanese skills could take them. Digital entries also running this year.





How to access the 旅行日本 [Travel Japan] JLTASA ゲーム

1. Ensure you or your school has renewed their JLTASA membership for 2022 (access will be released from 1st February 2022)
2. Complete the registration link at jltasa.asn.au/jltasa-game-ryokou-japan/
3. Once approved, the email address you nominated when registering will be given access to a folder to download the game file, teacher resources, and install instructions

RYOKOU JAPAN



FOUNDATION  and JAPANESE LANGUAGE
G JAPAN TO YOU TEACHERS ASSOCIATION OF S.A.



デモのビデオ

youtube.com/watch?v=MfjXhY0CDhY

きょうしのリソース

jltasa.asn.au/jltasa-game-ryokou-japan/

ゲームのウェブサイト (incl free graphics sets)

mysteryinjapan.com/



JAPANESE LANGUAGE TEACHERS' ASSOCIATION OF SA INC

2022 ANNUAL CONFERENCE

SAVE THE DATE + CALL FOR PRESENTERS

Expressions of interest now open for local presenters (Face to Face), interstate presenters (Zoom only), and asynchronous presentations (both local and interstate).

Complete the link by 28 Feb 2022 to register your interest:
<https://forms.gle/WSDFEKNm4Wd5Umkn7>

Queries: president@jltasa.asn.au

MAY 28, 2022 | VENUE TBC

南オーストラリア州日本語教師会

2022 Annual JLTASA Conference

2022年のJLTASAの年次会議

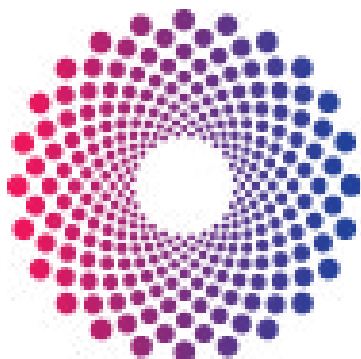
We're back for 2022! With an internationally renowned keynote speaker ready to go, the JLTASA Committee are leaping into action to see a face-to-face annual conference return at EDC, Hindmarsh. [See flyer at left.](#)

2022 Biennial Conference of the National Federation of Australia Japan Societies



“The next Biennial Conference of the National Federation of Australia Japan Societies will be held on 17-19 September 2021 in Adelaide. A conference committee comprising of representatives from the Japan Australia Friendship Association, the Australia Japan Association of South Australia and the Australia Japan Business Council of South Australia has been established to oversee the preparations. The conference will focus around the rejuvenated North Terrace hub of culture, education and government in Adelaide with UniSA and the Playford Hotel being two of the key venues. The conference promises to showcase the stories of South Australia’s relationship with Japan including premium food and beverage, manufacturing, sport, cultural links, education, government ties and the exciting potential of the recently announced Australian Space Agency”

Info: ausjpnconf2020.com and austjapanfed.org.au



NATIONAL SYMPOSIUM ON JAPANESE LANGUAGE EDUCATION

The biennial NSJLE has been re-scheduled for November 4-5, to be held at the Victoria State Library this year nsjle.org.au. This event is eligible for our teacher Professional Learning Grant - see the Grants section of the JLTASA website for details.

“2022 Theme: Be Inspired, Be Inspiring
Teachers of Japanese language all over Australia have a reputation for being passionate and innovative. The success of Japanese language education, in challenging times, has been in the most part due to our teachers and that passion and innovation. However, in the increasingly crowded curriculum with competing interests it is imperative that teachers continue to advocate for Japanese language education in an efficient and effective way. Leadership within the school, the teaching community and profession are imperative to further and

continually improve Japanese language education delivery. Japanese language skills and knowledge are important and useful in the global context and we need to ensure that we, as Japanese language education professionals are vocal, visible and most importantly inspiring in ensuring this message is conveyed to our learning communities.

The theme of the National Symposium on Japanese Language Education 2020 is ‘Be Inspired Be Inspiring’. We have convened presenters lead by our keynote speakers to inspire educators to become leaders in their

field or context to ensure that students and the wider school community connect with and highly value Japanese language and become aware of the pathways available for those with Japanese language skills as well as providing innovative, stimulating and relevant classes. One of the strengths of the Japanese language teaching community is its cohesive nature and willingness to network. This symposium aims to inspire the Japanese language teaching community to be inspiring in the classroom, educational institution, and the wider school community and within the Japanese language teacher network.”

Have you joined your local **ハブグループ?**

Local Hub Groups assist in supporting the general operations of JLTASA (eg through organising local hiragana competitions which lead to the 'state finals'), but more broadly our aims are to support and advocate. Hub Group details can be found below. Every effort has been made to ensure details are correct at time of publication.

New email address for Hub Group matters: hubs@jltasa.asn.au



Barossa and Light Hub Group

Jessica Nimmo

jessica.genua206@schools.sa.edu.au

Meets 2-3 times a term around Weeks 4/9, rotating between schools.

Southern Hub Group

Alysha Larcombe

alysha.milani746@schools.sa.edu.au

Meets Thursdays Weeks 3 and 7 at Hallett Cove South Primary School

North East Hub Group

Amanda Mlynowskyj

amanda.mlynowskyj593@schools.sa.edu.au

Meets Wed or Thursdays Week 4 each term, rotating between schools.

Western Hub Group

Natasha Gilbert

natasha.gilbert484@schools.sa.edu.au

Meets Tuesdays or Thursdays Weeks 3 and 8, rotating between schools



Megan Lock
Vice-President,
and Regional
Liaison

Megan first learnt (and fell in love with) Japanese at her rural primary school in the Limestone Coast region. This year she will be focusing on supporting our country members and facilitating greater access to JLTASA PL and student events. If you are teaching in rural or regional SA and want to know more, or have ideas for how JLTASA can better support our country members, please email Megan on: vp@jltasa.asn.au



Cindy Pitkin
Fmr President, and
Hub Group Liaison

You can't spell JLTASA Inc without a C! Cindy has been instrumental in the organisation and management of JLTASA for many, many years. This year Cindy will be liaising with Hub Groups, as well as looking to expand our support to SACE schools in the NT via our Senior Teachers Hub Group. Look out for info in Term 1 about how/when the Senior Hub Group will meet.

North East Hiragana Competition Grant Report



In 2019, Keithcot Farm Primary School hosted the 13th annual North East Hiragana Competition, using funds from a Hub Group grant. Competitors from nine schools from both the North East of Adelaide and the Barossa Valley District competed for the perpetual trophy. Each year students participate in 3 rounds of competition. The goal being to read either individual characters from the 46 sounds, individual characters including ten ten and maru or words with up to 4 characters, including ten ten and maru. Games, YouTube clips, dancing, sushi morning tea and lucky dips with traditional Japanese gifts or foods assist in making the day, a day to remember, for both students and teachers. Many spectators, including family members, leadership and students from Keithcot Farm Primary School were amazed by the reading and language skills students confidently displayed on the day.



JAPANESE LANGUAGE TEACHERS' ASSOCIATION OF SA INC

HIRAGANA MNEMONIC COMPETITION

Are you tired of teaching "ke for keg" and having to explain to kids what a keg is? Have you or a student/class created an awesome mnemonic which is too good not to share? Do you need a new way to encourage students to learn *kana* in 2022?

Then this is the competition for you!

We are on the hunt for the best mnemonics to create our own South Australian Hiragana Flashcard set!

COMPETITION RUNNING FOR TERMS 1-2

Open to all JLTASA members and member schools

JUDGING CRITERIA AND T&C ON OUR WEBSITE

Submissions via jltasa.asn.au/mnemonic/

Queries: president@jltasa.asn.au

南オーストラリア州日本語教師会

JAPAN FOUNDATION

BRINGING JAPAN TO YOU



Make sure you're signed up to receive updates from jpf.org.au

The Japan Foundation, based in Sydney, is THE go-to for all things Japan and Japan-Australia. We encourage members to visit their website and subscribe to their J-studies e-newsletter. With new resources frequently published (most recently, hiragana readers and a new e-textbook), and numerous professional learning offered each year, check them out today!

AVAILABLE RESOURCES INCLUDE:

- Student competitions, eg 'Video Matsuri'
- Grants
- Speech Contest
- Frequent news and current affairs updates
- JLPT information
- Teacher intensives and PL workshops
- Free e-textbooks and textbook resources, including listening exercises
- Film Festival



Inaugural Meeting of the SA-Japan Liaison Group

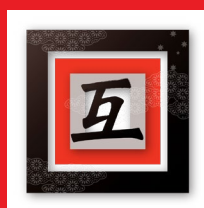
On November 25, Tom and Cindy attended the inaugural meeting of the newly formed SA-Japan Liaison Group. The group seeks to further strengthen ties between Japan and SA by bringing together members of the Australia Japan Business Council SA, Australia-Japan Association of SA, Australia-Japan Student Association of SA, Adelaide Japanese Community School, Japan Australia Friendship Association, Japanese Chamber of Commerce & Industry Adelaide, JET Alumni Association of South Australia, Japanese Society of Adelaide and the National Federation of Australia Japan Societies. The Consul-General Junji Shimada opened proceedings and each party present briefly outlined their organisation's aims. The Liaison Group will meet twice a year, sharing news, events and other happenings amongst our network.

Membership Renewal

- Membership renews on 1st February each year
- Payable by end of Term 1
(access to events contingent on active, paid membership)
- Managed through EdSA Gateway
- DOUBLE CHECK your email address and ensure all teachers at your site are included as a member
- A slight change to the 'non-practicing/TRT/student' membership categories has been made to ensure equity
- A letter of support/advocacy for your site line manager or leader is available on our website
- Write down your membership number when renewing so you can enter it when registering for events

All links, FAQs and supporting documentation is available at
<https://jltasa.asn.au/membership/>

We thank you in advance for your prompt payment and organisation of your membership dues to support the volunteer nature of our committee roles.





JAPANESE LANGUAGE TEACHERS' ASSOCIATION OF SA INC

YEAR 7-8 RECITAL

The annual JLTASA Recital sees students rehearse and recite a set script to demonstrate their speaking skills.

This year the annual recital will merge into a Year 7-8 event and coincide with the national Japanese Speech Contest (in Term 3), giving schools and students more time to prepare.

Script, criteria and more details at
jltasa.asn.au/event/year-78-japanese-recital/

SAT SEPTEMBER 3, 2022 | TIME TBC
EDC, MILNER STREET HINDMARSH
(e-submissions also available)

FREE FOR JLTASA MEMBERS
MAX FIVE ENTRIES PER SCHOOL

Registrations will open in Term 2
Queries: president@jltasa.asn.au

南オーストラリア州日本語教師会

School or faculty strapped for ¥? Apply for a **JLTASA 補助金 (ほじょきん)**

Grants are available to help support both teachers in their professional learning, but also the advocacy and visibility of Japanese in your school community. For more details and information on how to apply head to jltasa.asn.au/jltasa-grants/ Read on to see how the below schools used their grants to promote Japanese in their community.



Rivergum Christian College Japanese Classroom

Justine Talbot of Rivergum Christian College recently received a JLTASA Grant for a School Based Advocacy Project.

“The school has offered Japanese as a subject for a long time, but there has never been a Japanese classroom until 2021. Previously, the Japanese teacher went from class to class. The goal was to set the room up with a tatami style mat, with some low tables, screens (to hide the wet area at the back) and cushions if possible. My classroom needs to cater for foundation to year 10 level, so it will need some work to get it set up accordingly.”



Moonta Area School Japanese Mural

In 2019, Jane Swan applied for a JLTASA advocacy grant for Moonta Area School, to go towards a mural on the outside of their ATSI and Japanese language centre. Their design incorporated elements and icons to represent both Japanese and our local Aboriginal culture that their R-6 students came up with. They prepared the surfaces and mapped out our giant “colouring in” outlines in the school holidays and spent the first half of term 2 bringing the painting to life. Thanks to the help of their truly amazing volunteers, Kristine Lundberg and Sachie Trenwith, all students got to contribute and paint their “designated bit”. Even now, their students have an amazing sense of ownership with the project and the school is so grateful for the opportunity.



Hallett Cove East PS Japanese Festival Day and Garden Anniversary



Eden Hills PS Japanese Garden

After several years in the planning and making, our Japanese garden is finally complete! In 2019 Years 6/7 students learnt about Japanese gardens and designed their own garden models. Last year we established a small group of Year 7 students to design our very own Japanese garden at Eden Hills. With the help of a grant from JLTASA, we purchased plants, rocks, pebbles and garden ornaments and a group of Year 6/7 students worked with our groundsman and I to establish our garden. Unfortunately a number of our plants didn't survive the summer holidays so this year we have re-planted and also added our Shishi Odoshi (deer scarer) water feature. Most weeks a few students in the graduate classes take turns to water and tidy up the garden in their Japanese lessons so we hope that (despite the many autumn leaves!) our garden will be a lovely entrance to our office for years to come.



Where do you find...?

Other resources

資料 (しりょう) と お知らせ

JLTASA Kurna Acknowledgement

Tips to increase your proficiency and confidence

- Join JAFA for events - the Japan Australia Friendship Association
- Attend J-Kai - 4th Wed of every month @ Metro Hotel, Grote St.
- Check out AJA of SA events and kaiwa
- Give yourself a goal and do the Japanese Language Proficiency Test
- Other language courses: Japan Foundation, PCE Adelaide, WEA
- Watch J-Drama /films/ music - on SBS/ Netflix/ Crunchyroll/ etc.

Japanese Teaching Ideas Website - for PPTs, activities, work booklets, task ideas

Kids Web Japan - for stories, games, background information, exploration

Japan Foundation, Sydney - for resources, professional development, grants

Nihongodaisuki.com - for content, information

News Web Easy - for Japanese articles at Stage 1/2 reading level, or to support learning

Irasutoya.com, irasuton.com, fumira.jp - for images to use in PPTs, worksheets, etc.

'Japanese Teachers of Australia' Facebook Page; The Language Nerds; Twitter (search #mfltwitterati)

Meguro Language Centre - loads of vocab lists and short 1-slide grammar explanations/graphics

Highlighting Japan (monthly e-magazine by Japanese Govt)

Hiragana Times

Tsunagu Japan - like a Buzzfeed site all about Japan ('top 10 temples')

Tadoku Readers

Genki Japan (grammar)

Puni Puni (grammar)

Jisho.org (dictionary/ strokes)

Songs (search via Youtube)

Te asobi hajimaruyo, Kira kira boshi, Oni no pantsu, Hiragana rap, Rajio taiso, Super Simple Japanese channel, Baby Bus channel

DVDs/Videos

Studio Ghibli series, Little Travellers series, Treasury of Folktales by Yuri Yasada, 'Life Where I'm From' webseries

Gamification

Quizlet

Blooket

Kahoot

Wordwall

Quizziz

Flipgrid

Gimkit

Bookwizet

Edpuzzle

Classkick

Education Perfect (paid only)

Books and Other Resources

Intext Book Company

Asia Bookroom

Madden Education

Teachers Pay Teachers

Language Teaching Aids

Nihongo Shop Levelled Readers

'Japres' Flashcards/etc

Japan-esque Locales

Himeji Gardens

Daiso (Marion, Rundle Mall, Hollywood Plaza)

Little Tokyo (central markets)

ShinTokyo (Rundle Mall)

Uniqlo (coming late 2022 to the Myer Centre, Rundle Mall)



SPECIAL TAISHOGOTO PROGRAM FOR
PRIMARY SCHOOLS TO ENTER THE...

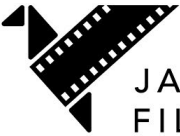
KOTO- OLYMPIGS

Promote Japanese language + culture learning
and exchange through music



Details and registrations coming soon!







**JAPANESE
FILM FESTIVAL
ONLINE 2022**
14-27 FEBRUARY

**BE THE FIRST TO
HEAR ABOUT
JFF ONLINE 2022**
SIGN UP TO OUR E-NEWSLETTER

AGSA



Yayoi Kusama: THE SPIRITS OF THE PUMPKINS DESCENDED INTO THE HEAVENS
From 1 April 2022
Free entry



Pure Form: Japanese sculptural ceramics
21 May - 6 Nov 2022
Free entry



**Kodomo no Hi
Japan Festival**
South Australia's largest Japanese cultural festival
こどもの日



**SAVE THE DATE
1 MAY 2022**



2022 JLTASA Newsletter



2022年の学年へようこそ。このニュースレターはバイリンガルで読めて、英語の挨拶は前で読んでください。
Welcome to the 2022 school year! This newsletter can be read bilingually - please read the English welcome at the front.



目次

新しい委員会メンバー	一
今年のイベントカレンダー、新しいアイデア	二
2022年の年次会議	三
ハブグループや補助金	四
資料とお知らせ	五

会長の挨拶

約束した「新しいノーマル」はどこ？

連絡: president@jltasa.asn.au



コロナ禍で、新年度が始まる時、先生方は新しい希望や期待で「今年はきっと違うだろう」と思っているかもしれませんがね。「最悪はもうないだろう」とか。毎年、チャレンジに打ち勝っても、常に教育や教師の仕事には新しく他のチャレンジがやってきます。しかし、パンデミックは確かに大変ですが、生徒が飽きないように、デジタルでの新しい教え方を生み出すと言う新しいチャンスにも恵まれました。だから、コロナ禍でもシルバーライニングがありますね。

2022年はJLTASAの年次会議を復活させる予定ですので、先生方にはワークショップでのプレゼンテーションをお願いしたいと思っています。教えることや知識をシェアすることは本当に大切なことですよね。特に、HA/LTを申し込みたい先生はお考えください。一人だけではなく、二人やグループでのワークショップも受け付けます。今年は「Asynchronous（非同期）」のワークショップをやるつもりで、事前に短い発表を録画できます。初めて発表する先生方はこのAsynchronousのワークショップはどうでしょうか。

2022年は新しい委員会メンバーが入って、新しいアイデアや考え方が出てきています。最近のAGSAのワークショップがいい例ですね。だから、先生方もアイデアやいいトピックを考えたら、ぜひ、委員会メンバーに連絡してください。JLTASAは教師会ですから、教師のアイデアやフィードバックは大切だと考えています。

色んなJLTASAの資料やサポートがあるのもお忘れなく。例えば、補助金制度（学生のイベントへの移動費、研修費、日本的な学校内のプロジェクト、ハブグループのプロジェクトなど）がありますので、是非、活用してください。

良い2022年を楽しみましょう。

[Furigana version here](#)